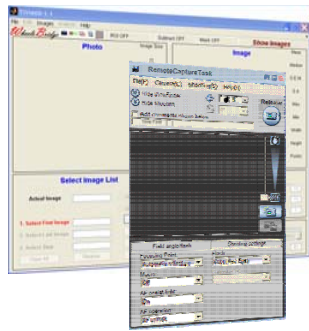


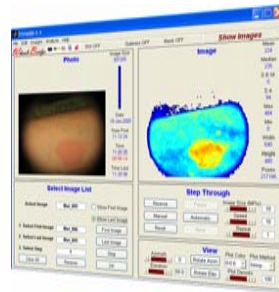
# TiVi600 Work Flow



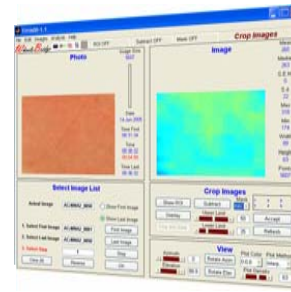
Set Camera Parameters



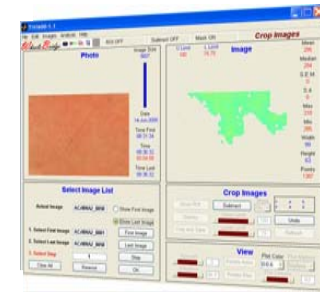
Capture the Images



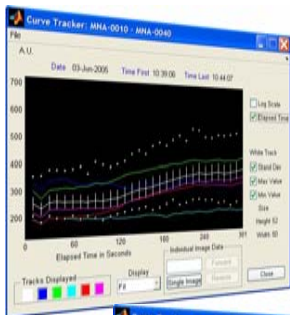
Crop to Size



Select a Region of Interest



Set Image Parameters



Curve Tracker displays time traces

View statistics of individual images

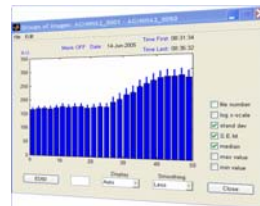
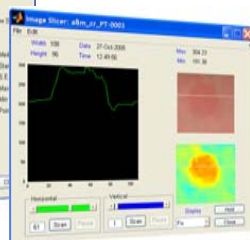


Image Sequence Statistics

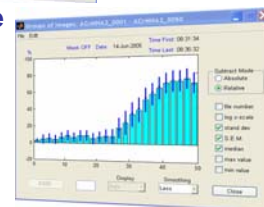


Analyze the Image Profile

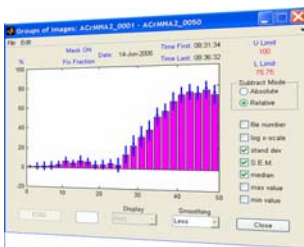
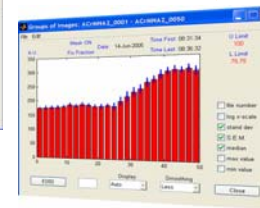


Subtraction of first image

See it all in the Gallery



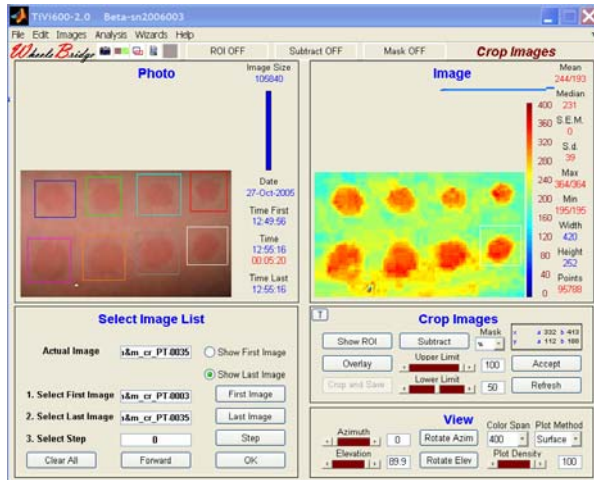
High responding areas only



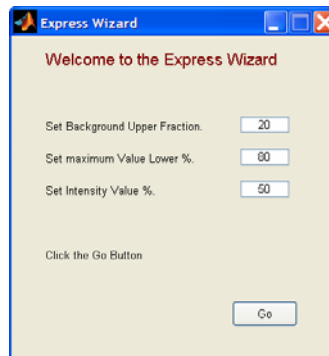
Watch relative changes

# TiVi600 Wizards

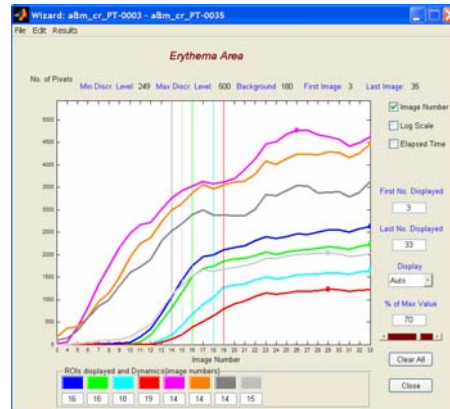
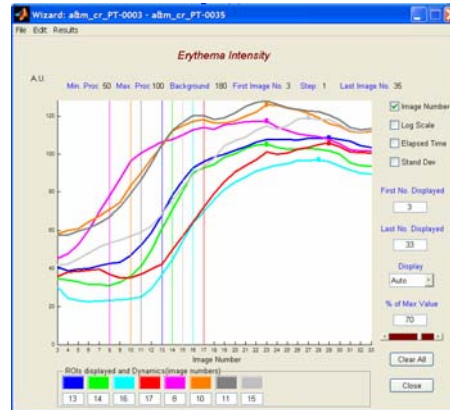
Step 1. Load the sequence of images.



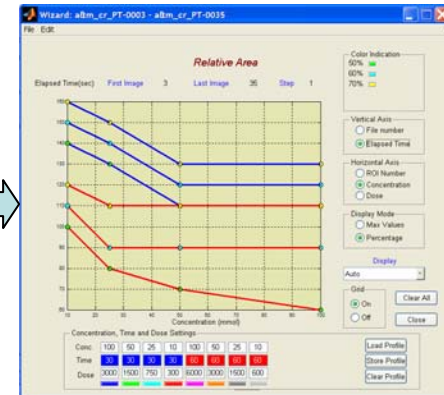
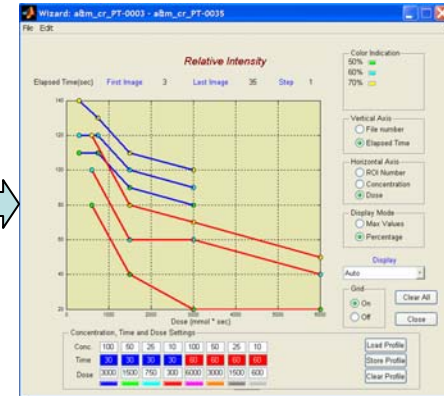
Step 2. Select the regions of interest.



Step 3. Start the Wizard and set the threshold values.



Step 4. View the result in the Erythema Intensity and Area window.



Step 5. Analyze the dynamics.